

FLOW CONTROL VALVE - INCH



Meter-Out Control Part No.	Meter-In Control Part No.	Tube O.D. in.	Port Size (M) NPT	Air Flow SCFM
71.1010	71.1110	1/8	10-32	3.5
71.1014	71.1114	1/8	1/8	6
71.1026	71.1126	5/32	10-32	3.5
71.1028	71.1128	5/32	1/8	6
71.1034	71.1134	5/32	1/4	6
71.1042	71.1142	3/16	1/8	8
71.1046	71.1146	3/16	1/4	14
71.1056	71.1156	1/4	1/8	8
71.1058	71.1158	1/4	1/4	16
71.1062	71.1162	1/4	3/8	16
71.1070	71.1170	5/16	1/4	28
71.1074	71.1174	5/16	3/8	28
71.1082	71.1182	3/8	1/4	16
71.1084	71.1184	3/8	3/8	32
71.1086	71.1186	3/8	1/2	56
71.1096	71.1196	1/2	1/2	60



Applications

- To adjust air flow and to control cylinder displacement with accuracy
- Mounts directly on the cylinder

Features

- Available in 2 types of control : meter-out (controls the exhaust) or meter-in (controls the intake)
- Light, compact and one piece construction
- Minimizes installation time and cost
- Speed may be accurately controlled even at low speed
- 360° swivel body
- Inch and metric sizes available
- Teflon coated thread

Specifications

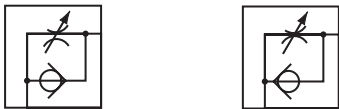
Maximum Working Pressure

145 PSI

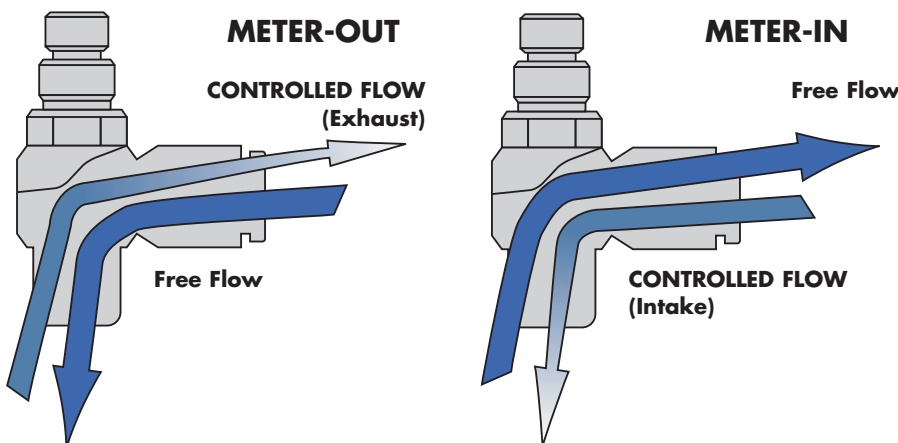
Working Temperature

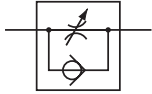
0 °C to 60 °C (32 °F to 140 °F)

FLOW CONTROL VALVE - METRIC



Meter-Out Control Part No.	Meter-In Control Part No.	Tube O.D. in.	Port Size (M) NPT	Air Flow SCFM
71.2026	71.2126	4	M5	3.5
71.2028	71.2128	4	1/8	6
71.2054	71.2154	6	M5	3.5
71.2056	71.2156	6	1/8	8
71.2058	71.2158	6	1/4	14
71.2068	71.2168	8	1/8	8
71.2070	71.2170	8	1/4	16
71.2084	71.2184	10	3/8	32
71.2096	71.2196	12	1/2	60





Applications

- Allows easy speed control of the cylinder's movement

Features

- Push-Type connector at each end
- Minimizes installation time and cost
- Light and compact
- Inch and metric sizes available
- Accepts nylon and polyurethane tubings
- Speed may be accurately controlled even at low speed

Specifications

Maximum Working Pressure

100 PSI

Working Temperature

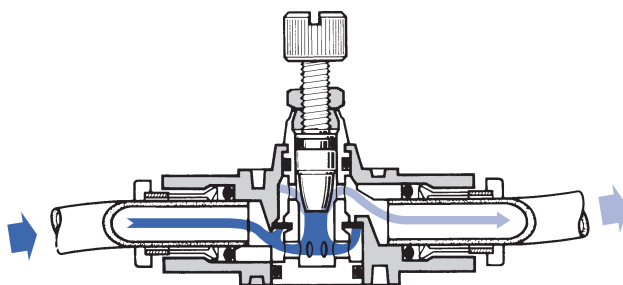
0 °C to 60 °C (32 °F to 140 °F)

SPEED CONTROLLER - INCH

Part No.	Body Size in.	Tube O.D. in.	Air Flow SCFM
71.3130	1/8	5/32	5
71.3144	1/8	3/16	5
71.3158	1/8	1/4	5
71.3230	M5	5/32	6
71.3244	1/4	3/16	6
71.3258	1/4	1/4	10
71.3272	1/4	5/16	10
71.3358	3/8	1/4	15
71.3372	3/8	5/16	21
71.3384	3/8	3/8	24
71.3484	1/2	3/8	37
71.3496	1/2	1/2	49

SPEED CONTROLLER - METRIC

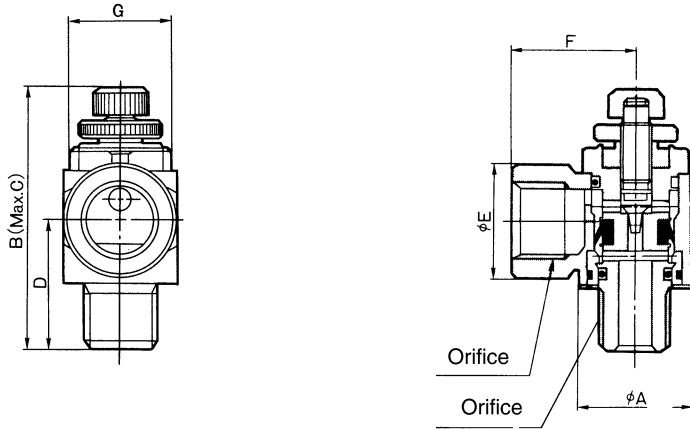
Part No.	Body Size in.	Tube O.D. in.	Air Flow SCFM
71.3630	1/8	4	5
71.3658	1/8	6	5
71.3758	1/4	6	10
71.3772	1/4	8	10
71.3858	3/8	6	15
71.3872	3/8	8	21
71.3884	3/8	10	24
71.3896	3/8	12	24
71.3984	1/2	10	37
71.3996	1/2	12	49



For any questions or information about compressed air you may contact us at
Tel. : 1-888-730-0501
Fax : 1-888-730-3522
 or visit our web site at
www.airmax.ca

METAL THREADED ELBOW

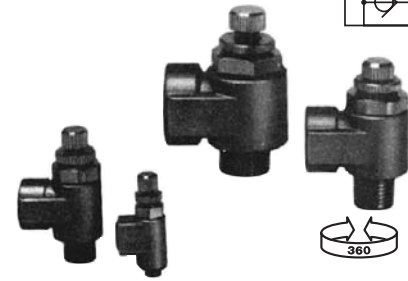
Part No.	Port size (F) NPT	Cylinder bore size (in.)	Air flow SCFM
71.4122	1/8	3/4 à 1-1/2	7
71.4124	1/4	3/4 à 1-1/2	10
71.4134	1/4	3/4 à 1-1/2	12
71.4136	3/8	1-1/4 à 2-1/2	30
71.4148	1/2	3-1/4 à 4	60



DIMENSIONS (mm)

Model	A	B	C	D	E	F	G
71.4122	15	39	43	18.3	15	18	14
71.4124	20	46	50.5	23.1	20	22	17
71.4134	26	51.8	56.3	25.6	26	26	21
71.4136	26	51.8	56.3	25.6	26	26	21
71.4148	30	64	70	35.8	30	33	24

Controlled Flow Exhaust



Applications

- Speed may be accurately controlled even at low speed

Features

- Minimizes installation time and cost
- Swivels at 360°
- Retainer prevents accidental loss of needle
- Controlled flow exhaust

Specifications

Maximum Working Pressure

100 PSI

Working Temperature

5°C to 60°C (40°F to 140°F)

Construction

Body : Zinc alloy

Needle guide: Brass, electroless nickel plated

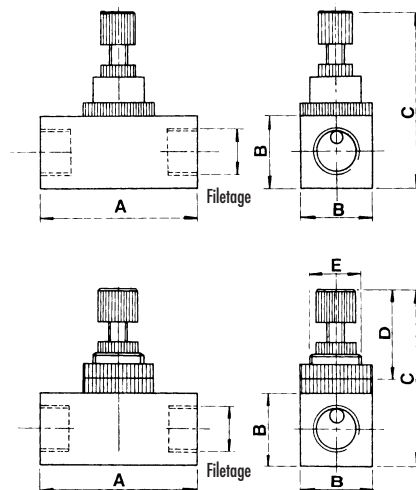
"O"ring: NBR

ECONOMICAL SPEED CONTROL VALVES

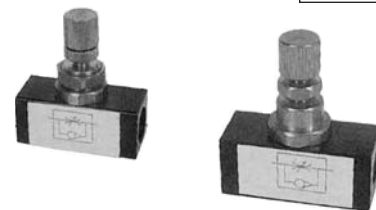
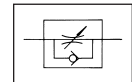
Part No.	Port size (F) NPT
71.5122	1/8
71.5144	1/4
71.5166	3/8
71.5177	1/2

DIMENSIONS (mm)

Model	A	B	C	D	E
71.5122	45	19	53	32	14
71.5144	45	19	53	32	14
71.5166	55	25	65	35	18
71.5177	60	32	68	35	22



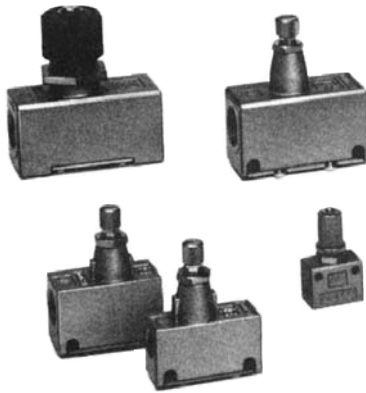
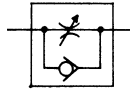
Can be reversed



Features

- Provides the finest control of piston rod speed for air cylinder
- Non-return mechanism allows full flow in one direction. But when the flow reverses the seals are tightened to divert the flow pass the fine large cone seat metering needle

Can be reversed



IN LINE SPEED CONTROLLER

Part No.	Port size (F) NPT	Air flow SCFM	Cylinder bore size (in.)
71.5211	M5	3	1/4 - 1
71.5222	1/8	9	3/4 - 1 1/2
71.5244	1/4	9	3/4 - 1 1/2
71.5264	1/4	29	1 1/4 - 2 1/2
71.5266	3/8	29	1 1/4 - 2 1/2
71.5274	1/4	59	1 1/2 - 4
71.5276	3/8	59	1 1/2 - 4
71.5277	1/2	59	1 1/2 - 4

Features

- Accurate speed control even at low speed
- Constant speed set

Specifications

Maximum Working Pressure

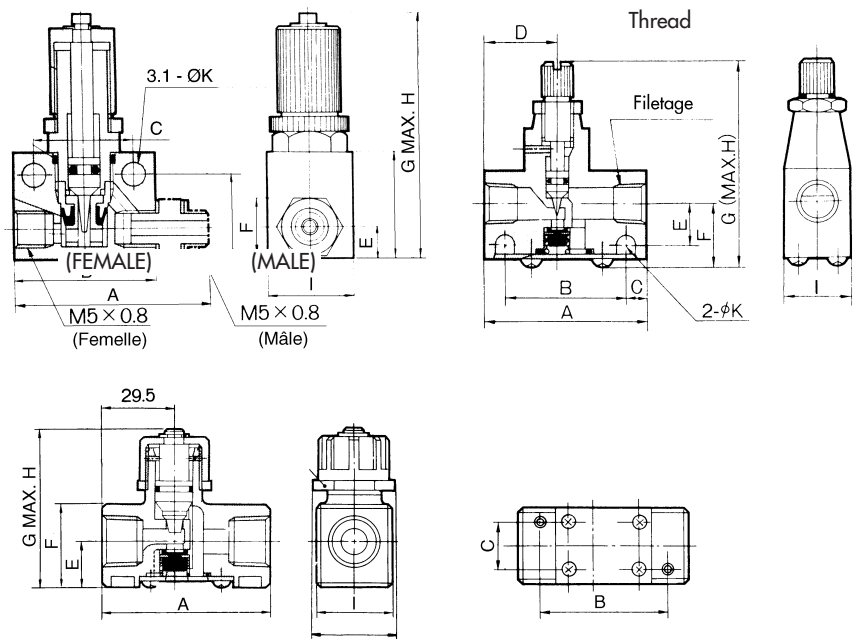
100 PSI

Working Temperature

5°C to 60°C (40°F to 140°F)

Number of needle rotations

8 turns



DIMENSIONS (mm)

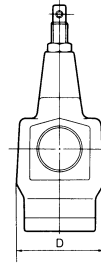
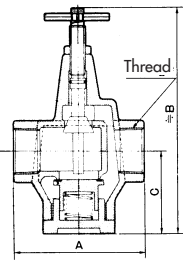
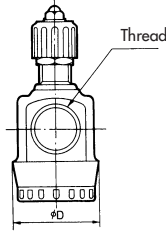
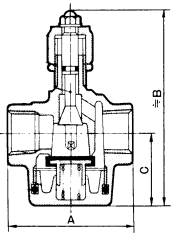
Model	Port size	A	B	C	D	E	F	G	H	I	K
71.5211	M5	27.5	20	14	-	8	12	35	46	12	3.1
71.5222	1/8	40	30	5	17	10	15.5	50	54.5	16	4.5
71.5244	1/4	40	30	5	23	11.5	17	51.5	56	20	4.5
71.5264	1/4	56	45.5	5.25	25	13.2	20.6	61	68	26	5.5
71.5266	3/8	56	45.5	5.25	25	13.2	20.6	61	68	26	5.5
71.5274	1/4	67.5	50	18	29.5	19	34	69.5	76.5	29	-
71.5276	3/8	67.5	50	18	29.5	19	34	69.5	76.5	29	-
71.5277	1/2	67.5	50	18	29.5	19	34	69.5	76.5	29	-

HIGH FLOW IN-LINE SPEED CONTROLLER

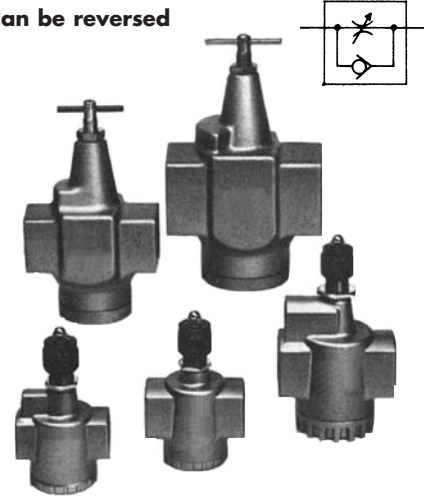
Part No.	Port Size (F) NPT	Air Flow SCFM	For Cylinder Bore Size (in.)
71.6274	1/4	13	2 1/2 - 5
71.6276	3/8	17	2 1/2 - 5
71.6277	1/2	24	2 1/2 - 5
71.6288	3/4	29	5 1/2 - 7 3/4
71.6290	1	60	6 1/4 - 9 3/4
71.6294	1 - 1/4	136	11 3/4
71.6298	1 - 1/2	168	11 3/4
71.6299	2	215	11 3/4

DIMENSIONS (mm)

Model	Port size	A	B	C	D
71.6274	1/4	67.5	122	38	50
71.6276	3/8	67.5	122	38	50
71.6277	1/2	67.5	122	38	50
71.6288	3/4	74.0	115	42	50
71.6290	1	90.0	158	55	62
71.6294	1 1/4	120.0	204	74	80
71.6298	1 1/2	150.0	262	93	94
71.6299	2	150.0	262	93	94



Can be reversed



Features

- Constant speed easily set
- Accurate speed control even at low speed

Specifications

Maximum Working Pressure

150 PSI

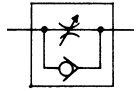
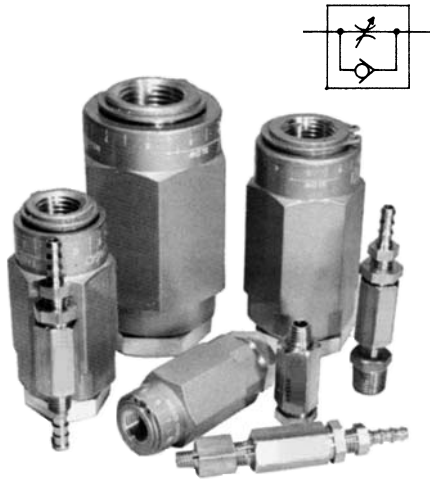
Working Temperature

5°C to 60°C (40°F to 140°F)

Number of needle rotations

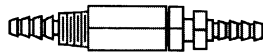
10 turns

For any questions
or information about
compressed air
you may contact us at
Tel. : **1-888-730-0501**
Fax : **1-888-730-3522**
or visit our web site at
www.airmax.ca



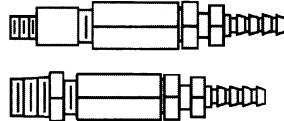
BRASS CONTROLLER

BARB TO BARB



Part No.	Barb Tube I.D.	Cv	Flow SCFM
71.7104	1/4	0.1	7

MALE TO BARB



Part No.	Thread (M) NPT	Barb Tube I.D.	Cv	Flow SCFM
71.7111	10-32	1/4	0.1	7
71.7112	1/8	1/4	0.1	7

MALE TO FEMALE



Part No.	Thread (M)	Thread (F)	Cv	Flow SCFM
71.7124	1/4-28	1/4-28	0.1	7

Applications

- Provides accurate control of cylinder motion

Features

- Fine tunes the speed of cylinders
- Brass or aluminum compact in-line design
- Assures a perfectly tapered flow. This unprecedented smoothness is made possible by the "IRIS" type orifice mechanism where needle-type flow controls generate turbulence as they close
- Maintains an even 360 degree laminar flow regardless of the setting
- Hexagonal adjustment sleeve

Specifications

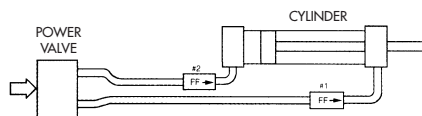
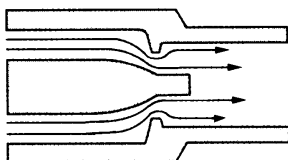
Maximum Working Pressure

250 PSI

Working Temperature

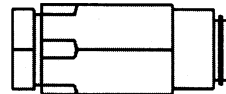
5°C to 121°C (40°F to 250°F)

IRIS TYPE MECHANISM for turbulence free flow



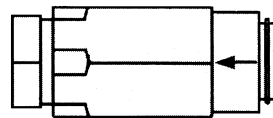
ALUMINUM CONTROLLER

1/8" NPT



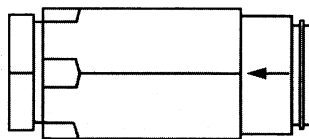
Part No.	Thread (F) NPT	Cv	Flow SCFM
71.7132	1/8	0.8	47

1/4" NPT



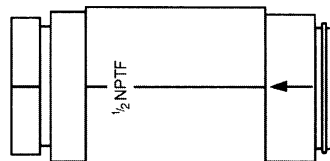
Part No.	Thread (F) NPT	Cv	Flow SCFM
71.7134	1/4	1.2	66

3/8" NPT



Part No.	Thread (F) NPT	Cv	Flow SCFM
71.7136	3/8	2.6	149

1/2" NPT



Part No.	Thread (F) NPT	Cv	Flow SCFM
71.7137	1/2	3.1	173