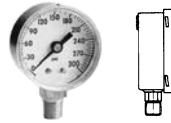




CBM MOUNT



LM MOUNT



1 1/2" DIA. 1/8" NPT

Part No.	Pressure Range (PSI)
62.1050*	0-160
62.1110	30" Hg
62.1130	0-15
62.1135	0-30
62.1140	0-60
62.1145	0-100
62.1150	0-160
62.1155	0-200
62.1160	0-300

Mounting Bracket : 62.1395

* Acrylic lens

1 1/2" DIA. 1/8" NPT

Part No.	Pressure Range (PSI)
62.1310	30" Hg
62.1330	0-15
62.1335	0-30
62.1340	0-60
62.1345	0-100
62.1350	0-160
62.1355	0-200

2" DIA. 1/8" NPT

Part No.	Pressure Range (PSI)
62.2335	0-30
62.2345	0-100
62.2350	0-160

2" DIA. 1/8" NPT

Part No.	Pressure Range (PSI)
62.2135	0-30
62.2140	0-60
62.2145	0-100
62.2150	0-160
62.2155	0-200

Mounting Bracket : 62.2795

2" DIA. 1/4" NPT

Part No.	Pressure Range (PSI)
62.2645*	0-100
62.2650*	0-160
62.2710	30" Hg
62.2730	0-15
62.2735	0-30
62.2740	0-60
62.2745	0-100
62.2750	0-160
62.2755	0-200
62.2760	0-300

* Acrylic lens

2" DIA. 1/4" NPT

Part No.	Pressure Range (PSI)
62.2450*	0-160
62.2510	30" Hg
62.2530	0-15
62.2535	0-30
62.2540	0-60
62.2545	0-100
62.2550	0-160
62.2555	0-200
62.2560	0-300

Mounting Bracket : 62.2795

* Acrylic lens

Lentille de remplacement pour 62.2450 : 62.2499

Applications

- For compressors, FRL, air lines, pneumatic tools and equipments

Features

- High quality dry gauges designed to provide reliable service
- For gas and liquid, non-crystallising and non-viscous, on applications not corrosive to brass
- Heat and corrosion resistant

Specifications

Maximum Working Pressure

Should be limited to 75% of the dial range

Working Temperature

-25°C to 60°C (-13°F to 140°F)

Reading Accuracy (@ 20°C)

± 0.3% at 10°C

Mounting

CBM : Center back mount

LM : Lower mount

Construction

- High quality copper mechanism
- Steel painted case
- Glass lens
- Acrylic lens for specific models



CBM MOUNT

2 1/2" DIA. 1/4" NPT

Part No.	Pressure Range (PSI)
62.3510	30" Hg
62.3530	0-15
62.3535	0-30
62.3540	0-60
62.3545	0-100
62.3550	0-160
62.3555	0-200
62.3560	0-300

Mounting Bracket : 62.3795



MOUNTING BRACKET (MOUNTING BRACKET FOR PANEL)

Part No.	Description
62.1395	Mounting Bracket for 1 1/2" dia.
62.2795	Mounting Bracket for 2" dia.



LM MOUNT

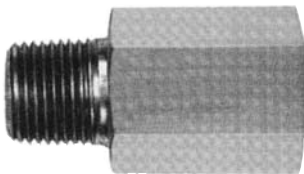
2 1/2" DIA. 1/4" NPT

Part No.	Pressure Range (PSI)
62.3710	30" Hg
62.3715	30" Hg / 0-30
62.3720	30" Hg / 0-60
62.3725	30" Hg / 0-100
62.3730	0-15
62.3735	0-30
62.3740	0-60
62.3745	0-100
62.3750	0-160
62.3755	0-200
62.3760	0-300
62.3765	0-600
62.3770	0-1000
62.3780	0-3000
62.3785	0-5000

4" DIA. 1/4" NPT

Part No.	Pressure Range (PSI)
62.4710	30" Hg
62.4715	30" Hg / 0-30
62.4730	0-15
62.4735	0-30
62.4740	0-60
62.4745	0-100
62.4750	0-160
62.4755	0-200
62.4760	0-300
62.4765	0-600
62.4785	0-5000

* ABS case and acrylic lens



BRASS PRESSURE SNUBBER

Applications

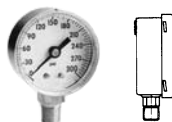
- Reduce the effects of vibration and pulsation which can damage the gauge
- Incorporated stainless steel porous element

Part No.	Fitting	Pressure
62.5000	1/4" NPT	1500 PSI

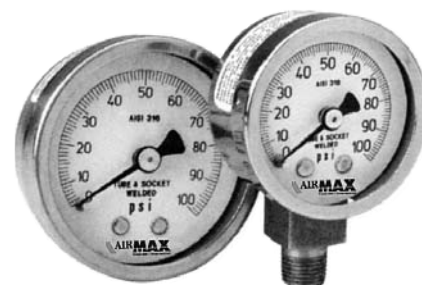
Silicone fluid does not turn yellow at high temperature



CBM MOUNT



LM MOUNT



2 1/2" DIA. 1/4" NPT

Part No.	Pressure Range (PSI)
62.6510	30" Hg
62.6535	0-30
62.6540	0-60
62.6545	0-100
62.6550	0-160
62.6560	0-300
62.6563	0-500
62.6565	0-600
62.6570	0-1 000
62.6575	0-1 500
62.6580	0-2 000
62.6585	0-3 000
62.6588	0-4 000
62.6590	0-5 000
62.6592	0-6 000
62.6595	0-10 000

2 1/2" DIA. 1/4" NPT

Part No.	Pressure Range (PSI)
62.6610	30" Hg
62.6635	0-30
62.6640	0-60
62.6645	0-100
62.6650	0-160
62.6655	0-200
62.6660	0-300
62.6663	0-500
62.6665	0-600
62.6670	0-1 000
62.6675	0-1 500
62.6680	0-2 000
62.6685	0-3 000
62.6688	0-4 000
62.6690	0-5 000
62.6692	0-6 000
62.6695	0-10 000

4" DIA. 1/4" NPT

Part No.	Pressure Range (PSI)
62.6710	30" Hg
62.6735	0-30
62.6740	0-60
62.6745	0-100
62.6750	0-160
62.6760	0-300
62.6765	0-600
62.6770	0-1 000
62.6780	0-2 000
62.6785	0-3 000
62.6790	0-5 000

4" DIA. 1/4" NPT

Part No.	Pressure Range (PSI)
62.6810	30" Hg
62.6835	0-30
62.6840	0-60
62.6845	0-100
62.6850	0-160
62.6855	0-200
62.6860	0-300
62.6865	0-600
62.6870	0-1 000
62.6875	0-1 500
62.6880	0-2 000
62.6885	0-3 000
62.6890	0-5 000
62.6895	0-10 000

MOUNTING BRACKET FOR PANEL

Part No.	Description
62.3795	Mounting Bracket for CBM 2-1/2" dia.
62.6795	Mounting Bracket for CBM 4" dia.

Applications

- Ideal for pneumatic systems, machine tools and equipments, compressors and hydraulic tools which produce vibration and pulsation
- Excellent choice for industries; agro-food, agriculture, pharmaceutical, petrochemical or in any other non-corrosive environment

Features

- For gas, liquid and fluids, non-viscous and non-crystalline, not corrosive to copper alloy
- Excellent resistance to strong fluctuation, pulsation, vibration and metal fatigue
- Stainless steel case
- Quality copper mechanism
- High quality clear silicone fluid does not turn yellow at high temperature
- Polycarbonate lens

Specifications

Maximum Working Pressure

Should be limited to 75% of the dial range

Working Temperature

-20°C to 80°C (-4°F to 176°F)

Mounting

CBM : Center back mount

LM : Lower mount