

### PIPING ADAPTOR

Body in.	Air Inlet (F) NPT	Without Bracket	With L Bracket	With T Bracket
1/8	1/8	54.1151 N	54.1251 N	54.1351 N
1/8	1/4	54.1152 N	54.1252 N	54.1352 N
1/8	3/8	54.1153 N	54.1253 N	54.1353 N
3/8	1/4	54.1162 N	54.1262 N	54.1362 N
3/8	3/8	54.1163 N	54.1263 N	54.1363 N
3/8	1/2	54.1164 N	54.1264 N	54.1364 N
1/2	3/8	54.1173 N	54.1273 N	54.1373 N
1/2	1/2	54.1174 N	54.1274 N	54.1374 N
1/2	3/4	54.1185 N	54.1285 N	54.1385 N
1/2*	3/4	54.1186 N	54.1286 N	54.1386 N
3/4, 1	3/4	54.1194 N	54.1294 N	54.1394 N
3/4, 1	1	54.1195 N	54.1295 N	54.1395 N

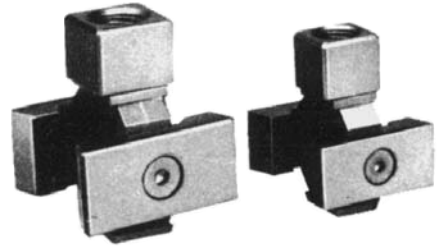
\*Oversized



### T-TYPE SPACER (WITH AIR OUTLET)

Body in.	Air Inlet (F) NPT	Without Bracket	With L Bracket	With T Bracket
1/8	1/8	54.2151 N	54.2251 N	54.2351 N
1/8	1/4	54.2152 N	54.2252 N	54.2352 N
3/8	1/8	54.2161 N	54.2261 N	54.2361 N
3/8	1/4	54.2162 N	54.2262 N	54.2362 N
1/2	1/4	54.2172 N	54.2272 N	54.2372 N
1/2	3/8	54.2173 N	54.2273 N	54.2373 N
1/2*	1/4	54.2182 N	54.2282 N	54.2382 N
1/2*	3/8	54.2183 N	54.2283 N	54.2383 N
3/4, 1	3/8	54.2193 N	54.2293 N	54.2393 N
3/4, 1	1/2	54.2194 N	54.2294 N	54.2394 N

\*Oversized



### SPACER



Body in.	Without Bracket	With L Bracket	With T Bracket
1/8	54.3151	54.3251	54.3351
3/8	54.3161	54.3261	54.3361
1/2	54.3172	54.3272	54.3372
1/2*	54.3182	54.3282	54.3382
3/4, 1	54.3193	54.3293	54.3393

\*Oversized

### L-TYPE BRACKET

Body in.	Part No.
1/8	54.4151
3/8	54.4152
1/2	54.4162
1/2*	54.4163
3/4, 1	54.4173



\*Oversized

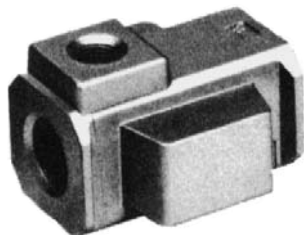
### T-TYPE BRACKET

Body in.	Part No.
1/8	54.4251
3/8	54.4252
1/2	54.4262
1/2*	54.4263
3/4, 1	54.4273



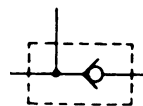
\*Oversized

**CHECK VALVE**



**Features**

- Prevents back flow of lubricated air from lubricator when both lubricated and non-lubricated air supply are required



Body in.	Air Inlet (F) NPT	Part No.
1/8	1/8	54.5151 N
1/8	1/4	54.5152 N
3/8	1/8	54.5162 N
3/8	1/4	54.5163 N
1/2	1/4	54.5173 N
1/2	3/8	54.5174 N

**PRESSURE SWITCH**



**Features**

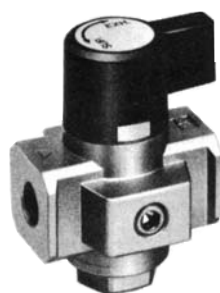
- Pressure switch allowing an electrical signal when activated



Body in.	Without Bracket	With L Bracket	With T Bracket
1/8	54.6151	54.6251	54.6351 N
3/8	54.6152	54.6252	54.6352 N
1/2	54.6162	54.6262	54.6362 N
1/2*	54.6163	54.6263	54.6363 N
3/4, 1	54.6173	54.6273	54.6373 N

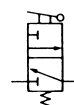
\* surdimensionné

**RELIEVING SHUT-OFF VALVE**



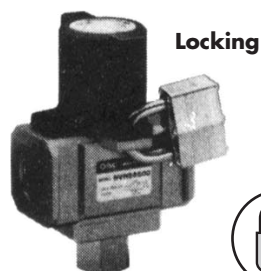
**Features**

- Relieves downstream pressure for servicing



Body in.	Air Inlet (F) NPT	Part No.
1/8	1/8	54.7251 N
1/8	1/4	54.7252 N
3/8	1/4	54.7262 N
3/8	3/8	54.7263 N
1/2	3/8	54.7273 N
1/2	1/2	54.7274 N

**SAFETY VALVE WITH LOCK-OUT CAPABILITY**



Locking



**Features**

- Prevents accidental start-up during network maintenance by installing a padlock while valve is in the exhaust position
- Padlock not included



Body in.	Air Inlet (F) NPT	Part No.
1/8	1/8	54.7351 N
3/8	1/4	54.7352 N
1/2	1/4	54.7362 N
3/4	3/4	54.7363 N