



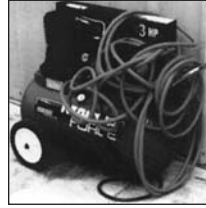
MAKE WORK AREA SAFER



ELIMINATE HOSE HANDLING PROBLEMS



EXTEND HOSE LIFE



ELIMINATE HOSE STORAGE PROBLEMS



MINI PORTABLE HOSE REEL



STANDARD PORTABLE HOSE REEL

Part No.	Dimensions (in.)		
	H	W	D
52.0100	13-1/8"	13-3/4"	10-1/8"

WITH POLYMAX HOSE ASSEMBLY

Part No.	Hose I.D. in.	Length ft.	Thread (M) NPT
52.0197	1/4	100	1/4
52.0258	3/8	50	1/4
52.0278	3/8	75	1/4

Replacement hose: see page 119

Part No.	Dimensions (in.)		
	H	W	D
52.0400	15-1/2"	15-1/2"	13-1/8"

WITH POLYMAX HOSE ASSEMBLY

Part No.	Hose I.D. in.	Length ft.	Thread (M) NPT
52.0598	3/8	100	1/2

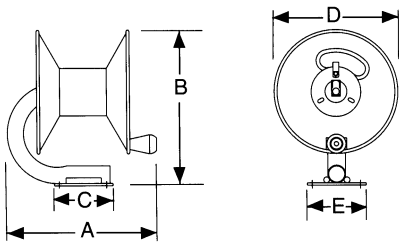
Replacement hose: see page 119

Part No.	Dimensions (in.)		
	H	W	D
52.0500	20-1/2"	18-7/8"	16-1/8"

WITH POLYMAX HOSE ASSEMBLY

Part No.	Hose I.D. in.	Length ft.	Thread (M) NPT

Replacement hose: see page 119



ACCESSORIES

CONSTRUCTION CADDY



Part No.
52.0710

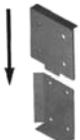
ROOF JACK KIT

(TO BE USED WITH CONSTRUCTION CADDY)



Part No.
52.0715

SAFETY LOCK BRACKET



Part No.
52.0720

ADJUSTABLE BRACKET



Part No.
52.0725

Applications

- Ideal for garages, shops, contractors, mobile units, agriculture, tools and equipment renting locations

Features

- Eliminate hose handling problems
- Extend hose life
- Make shop, garage and work area safer
- Ergonomic handle is mounted to solid, triangular steel base
- Mounting plate allows for quick and easy attachment to almost any surface including walls, work benches and pressure washer frames
- Supply hose included. Heavy duty 26" with push-on 1/4 M (NPT) fittings
- Maintenance-free. Factory lubricated

Specifications

Maximum Working Pressure

300 PSI

Working Temperature

-29°C to 65°C (-20°F to 150°F)

IDEAL FOR CONSTRUCTORS





Applications

- Ideal for garages, shops or plant maintenance
- Suited for assembly workstation, maintenance worktable, light mechanic workshops

To maximize ergonomic work

PRACTICAL HOSE REEL

Features

- Allows for quick and easy attachment to ceiling, walls, working units or any other surface
- Thermoplastic hose with swivel fitting
- Ergonomic and robust, helps to prevent tripping accidents and injuries by keeping hoses off the floor.
- Corrosion resistant

Specifications

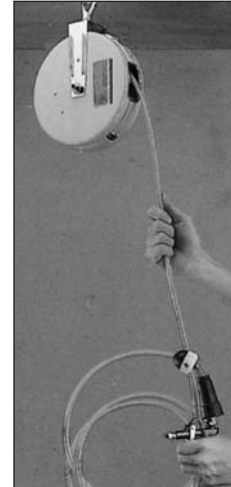
Maximum Working Pressure

100 PSI

Weight

3 lbs (1.4 Kg)

Part No.	Poly-urethane		Thread (M) NPT
	Tube O.D. in.	Length ft.	
52.0755	8x5	25	1/4
52.0760	3/8	20	1/4



Applications

- Ideal for garages, shops or plant maintenance

Features

- Designed to retract the hose and suspend tools
- Allows the worker to suspend a tool up to 3 lbs (1.5 Kg)
- Robust and lightweight
- Includes 48" thermoplastic hose with 1/4" M (NPT) swivel fitting

HOSE REEL - BALANCER

Features

Maximum Working Pressure

100 PSI

Weight

1.89 lbs (.89 Kg)

Part No.	Poly-urethane		Thread (M) NPT
	Tube O.D. mm	Length ft.	
52.0770	8 x 5	48	1/4



Use a swivel connector with flow control (Series 63) to improve productivity by increasing manoeuvrability and decreasing workers fatigue and injury. (see page 166)

Ideal for mobile units and construction work

WORKING PRESSURE: 3000 PSI

COMPACT MANUAL HOSE REEL

Part No.	Hose I.D. in.	Maximum length ft.
52.1160	3/8	75
	1/2	50

COMPACT MANUAL HOSE REEL

Part No.	Hose I.D. in.	Maximum length ft.
52.1170	3/8	150
	1/2	100



Applications

- Best applied for small truck skid units for pesticides, pressure wash, agriculture or deployment of air tools in the construction trades where a maximum hose length is required

Features

- Beaded edges on spool prevents hose damage or injury to operator
- Heavy duty bearing hubs are factory lubricated for years of dependable service
- Removable handle can be mounted on either side
- Fully adjustable nylon brake

Specifications

Maximum Working Pressure

3000 PSI

Inlet

1/2" (M) NPT

Construction

Painted steel and heavy 12 GA base

LOW CAPACITY MANUAL HOSE REEL

Part No.	Hose I.D. in.	Maximum length ft.	Weight lbs
52.1260	3/8	100	23
	1/2	75	23

WORKING PRESSURE: 3000 PSI

STANDARD MANUAL HOSE REEL

Part No.	Hose I.D. in.	Maximum length ft.	Weight lbs
52.1360	3/8	250	28
	1/2	175	28



EXTRA CAPACITY MANUAL HOSE REEL

Part No.	Hose I.D. in.	Maximum length ft.	Weight lbs
52.1460	3/8	350	33
	1/2	275	33

HAND CRANK HOSE REEL

Part No.	Hose I.D.	Maximum Length	Inlet Outlet
52.0750	5/16 in. 8.5 mm	100 ft. 30 m	1/4"



IDEAL FOR PRESSURE WASH



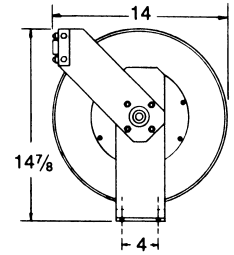


Make work area safer

HOSE REEL 1/4" & 3/8"

Part No.

52.4300



Applications

- Ideal for plant maintenance, auto/truck service garages, shops or other locations where shorter, low volume hoses are used with air, water, oil or grease applications

Features

- With or without hose
- Solid 12 GA mounting plate
- Hidden latch mechanism to prevent grime buildup
- All brass shaft and swivel on low pressure reels
- Fully closed bead on spool to prevent hose cutting

Specifications

Maximum Working Pressure

1000 PSI

Working Temperature

93°C (200°F)

Inlet

3/8" (F) NPT

ASSEMBLY - 1/4" I.D. HOSE

Part No.						Length ft.	Thread (M) NPT
With Hose Fleximax	With Hose Promax	With Hose Supermax	With Hose Python	With Hose Thermomax			
52.4121	52.4123	52.4125	52.4127	52.4129	25	1/4	
52.4131	52.4133	52.4135	52.4137	52.4139	35	1/4	

Replacement hose: series 49 and 50

ASSEMBLY - 3/8" I.D. HOSE

Part No.						Length ft.	Thread (M) NPT
With Hose Fleximax	With Hose Promax	With Hose Supermax	With Hose Python	With Hose Thermomax			
52.4320	52.4322	52.4324	52.4326	52.4328	25	3/8	
52.4321	52.4323	52.4325	52.4327	52.4329	25	1/4	

Replacement hose: series 49 and 50

ACCESSORIES

GUIDE ROLLERS FOR HOSE

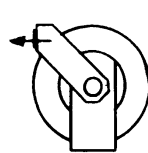
Part No.	Hose I.D. (in.)
52.9140	1/4
52.9160	3/8
52.9170	1/2
52.9180	3/4
52.9190	1

ACCESSORIES

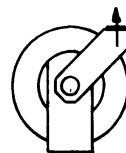
Part No.

- 52.4597 Wall Bracket
- 52.4599 Swivel Base

UNIVERSAL INSTALLATION



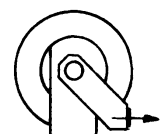
SF



SC



SM



RF

Series 52

High Capacity Spring Retractable Hose Reels

HOSE REEL 1/4", 3/8" & 1/2"

Part No.

52.4500

ASSEMBLY - 1/4" I.D. HOSE

Part. No.						
With Hose Fleximax	With Hose Promax	With Hose Supermax	With Hose Python	With Hose Thermomax	Length ft.	Thread (M) NPT
52.4151	52.4153	52.4155	52.4157	52.4159	50	1/4

ASSEMBLY - 3/8" I.D. HOSE

Part. No.						
With Hose Fleximax	With Hose Promax	With Hose Supermax	With Hose Python	With Hose Thermomax	Length ft.	Thread (M) NPT
52.4330	52.4332	52.4334	52.4336	52.4338	35	3/8
52.4331	52.4333	52.4335	52.4337	52.4339	35	1/4
52.4450	52.4452	52.4454	52.4456	52.4458	50	3/8
52.4451	52.4453	52.4455	52.4457	52.4459	50	1/4
52.4470	52.4472	52.4474	52.4476	52.4478	75	3/8
52.4471	52.4473	52.4475	52.4477	52.4479	75	1/4

Replacement hose: series 49 and 50

ASSEMBLY - 1/2" I.D. HOSE

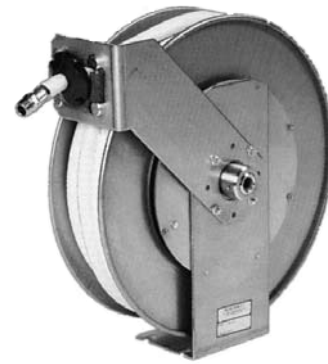
Part. No.						
With Hose Fleximax	With Hose Promax	With Hose Supermax	With Hose Python	With Hose Thermomax	Length ft.	Thread (M) NPT
52.4530	52.4532	52.4534	52.4536	52.4538	35	1/2
52.4531	52.4533	52.4535	52.4537	52.4539	35	3/8
52.4550	52.4552	52.4554	52.4556	52.4558	50	1/2
52.4551	52.4553	52.4555	52.4557	52.4559	50	3/8

Replacement hose: series 49 and 50

ACCESSORIES

GUIDE ROLLERS FOR HOSE

Part No.	Hose I.D. (in.)
52.9140	1/4
52.9160	3/8
52.9170	1/2
52.9180	3/4
52.9190	1



Applications

Ideal for plant maintenance, auto/truck service garages, shops or other locations where short hoses are used with air, water, oil or grease applications

Features

- Two models based on needed capacity
- With or without hose
- Solid 12 GA mounting plate
- Hidden latch mechanism to prevent grime buildup
- All brass shaft and swivel
- Fully closed bead on spool to prevent hose cutting

Specifications

Maximum Working Pressure

1000 PSI

Working Temperature

93°C (200°F)

Inlet

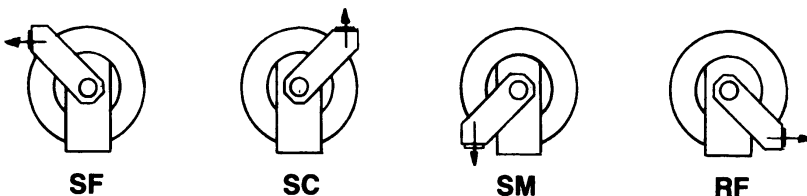
1/2" (F) NPT

ACCESSORIES

Part No.

52.4597 Wall Bracket
52.4599 Swivel Base

UNIVERSAL INSTALLATION



Ideal for mobile units



Applications

- For lawn care, agriculture, service truck and many industrial applications
- Suitable for air, water, oil, grease and chemicals where longer lengths of hose are required

Features

- Beaded edges on spool prevents hose damage or injury to operator
- Heavy duty bearing hubs are factory lubricated for years of dependable service
- For 3/4" and 1" inch hose applications

Specifications

Maximum Working Pressure

300 PSI

Working Temperature

93°C (200°F)

Inlet

1" (F) NPT

HEAVY DUTY SPRING RETRACTABLE HOSE REEL

Part No.	Hose I.D. in.	Length ft.	Weight lbs
52.6180	3/4	70	65
52.6190	1	45	65

MOTOR DRIVEN HOSE REEL

LARGE SPOOL MODEL

No. de pièce	Boyau dia. int. po.	Longueur maximale pi.	Poids lbs
52.8160	3/8	350	58
	1/2	275	58
52.8180	3/4	100	62
	1	75	62

Features

Maximum Working Pressure

Model 3/8" and 1/2"..... 3000 PSI

Model 3/4" and 1"..... 300 PSI

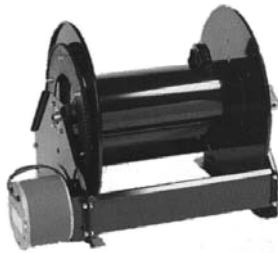
Working Temperature

93°C (200°F)

Inlet

Model 3/8" and 1/2"..... 1/2" (F) NPT

Model 3/4" and 1"..... 1" (M) NPT



Applications

- For lawn care, agriculture, service truck and many industrial applications
- Suitable for air, water, oil, grease and chemicals where longer lengths of hose are required

Features

- Large and very large steel spool
- Beaded edges on spool prevents hose damage or injury to operator
- 12 volts motor suited for outside applications
- Motor sprocket and chain pinch point is safeguarded by design
- Solenoid and momentary switches available
- Brass swivel will not corrode in water applications
- For 3/8" to 1" inch hose applications

VERY LARGE SPOOL MODEL

No. de pièce	Boyau dia. int. po.	Longueur maximale pi.	Poids lbs
52.8260	3/8	450	63
	1/2	375	63
52.8280	3/4	125	67
	1	100	

ACCESSORIES FOR MOTOR DRIVEN HOSE REEL

Part No.	Description
52.8510	Switch
52.8520	Solenoid (12 Volts DC)
52.8530	Electric Motor (12 Volts DC)
52.8550	Roller bracket assembly

BRACKET FOR I-BEAM

No. de pièce : 52.9500

ACCESSORIES

GUIDE ROLLERS FOR HOSE

Part No.	Hose I.D. (in.)
52.9140	1/4
52.9160	3/8
52.9170	1/2
52.9180	3/4
52.9190	1