

*VAL Innovation*



One Way Shut-Off

**The Coupler of the year 2000**

*THE MOST ADVANCED TECHNOLOGY IN THE COUPLER INDUSTRY*

**COMPATIBLE WITH ALL INDUSTRIAL TYPE COUPLERS ON THE MARKET**



**Extremely light**

**VAL** couplers are made of composite materials reinforced with fibreglass



**Non-scratch**

Non-scratch - **VAL** couplers do not scratch surfaces



**Solid and durable**



**VAL** couplers last up to 6 times longer in high-impact applications



**Superior flow**



**VAL** couplers allow 10% more flow than conventional couplers



**The most economical safety coupler on the market**

**VAL** couplers are made to insure up to 200 000 airtight connections

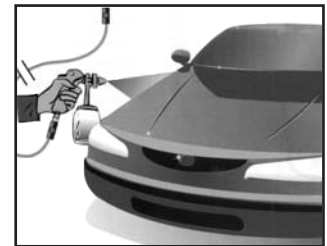


**Safe + Ergonomic**

Complies with security norms  
- ISO 4414  
- DIN EN 983

The shape, weight, size as well as the safety disconnection feature make **VAL** couplers the essential coupler

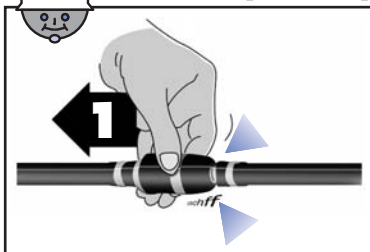
**Ideal for body shops**



**Ideal for assembly lines**

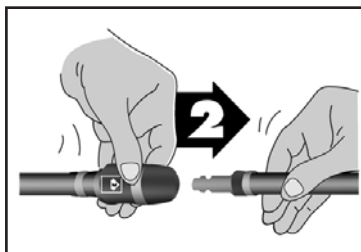


**2 - way safety disconnection**



**1ST STEP**

Pulling back on the coupler allows the pressure to escape



**2ND STEP**

A simple push disconnects the plug

**Prevents dangerous hose whips**



**Easy connection under pressure**

# Series 24

## AIRMAX VAL High Flow Safety Couplers (Type H-1)



- Designed for **HVLP** applications
- Prevents dangerous hose whips

### ADVANCED TECHNOLOGY

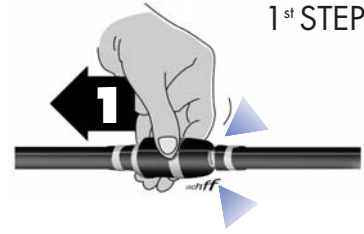
Two-way safety disconnection



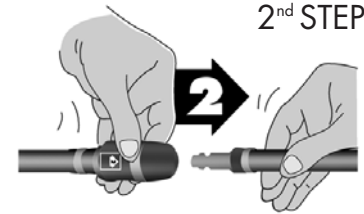
1- Pulling back on the coupler allows the pressure to escape.

### One Way Shut Off

1<sup>st</sup> STEP



2<sup>nd</sup> STEP



2- A simple push disconnects the plug.

The two-way safety disconnection system avoids accidental disconnections.

### LARGE AIR FLOW CAPACITY

67 SCFM



- Greater air flow increase the performance of air tools.

### TECHNICAL INNOVATION

Coupler body manufactured with an extremely resistant composite material

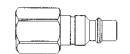


- Resistant to abrasion
- Shockproof
- Vibration resistant

#### FEMALE THREAD



Coupler



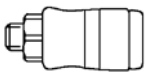
Plug

#### Plug

#### Automatic Coupler

Thread (F) NPT in.	Part No.	Part No.
1/4	23.1142	24.6442
3/8	23.1162	24.6462
1/2	23.1172	24.6472

#### MALE THREAD



Coupler



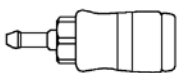
Plug

#### Plug

#### Automatic Coupler

Thread (F) NPT in.	Part No.	Part No.
1/4	23.1242	24.6542
3/8	23.1262	24.6562
1/2	23.1272	24.6572

#### HOSE BARB



Coupler



Plug

#### Plug

#### Automatic Coupler

Hose I.D. in.	Part No.	Part No.
1/4	23.1342	24.6642
5/16	23.1352	24.6652
3/8	23.1362	24.6662
1/2	23.1372	24.6672

Interchangeable with High Flow plugs.



**Type H-1**

The AirMax VAL High Flow Safety Couplers are interchangeable with the H-1 plugs (page 49 of the catalogue).

**Interchangeable CEJN 320**

### The Coupler of the Year 2000





One Way Shut-Off



## Applications

- Safe and reliable, resists to the most demanding industrial applications
- Ideal for assembly lines, body shops, work shops, paint shops, the furniture industry and the agricultural industry
- Substitute for stainless steel couplers in corrosive environments

## Features

- Reliable and ergonomic manipulation
- Very resistant, replaces brass and steel couplers
- Lightweight, does not scratch surfaces
- Allows for greater air flow
- Airtight, prevents costly air leaks
- Safe and fast disconnection even under pressure
- Compatible with all industrial type couplers on the market
- 2 way safety system prevents accidental disconnections

## Specifications

### Maximum Working Pressure

230 PSI

### Construction

Composite materials reinforced with fiberglass  
Threaded part: Aluminium

### Standards

ISO 4414, ISO 6150, DIN EN 983

## Essential for worker's security

THE LATEST INNOVATION IN THE FIELD OF PNEUMATIC COUPLERS



FLOW 1/4"

FLOW 3/8"



### FEMALE THREAD

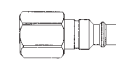
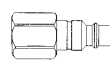
PLUG

AUTOMATIC  
COUPLER  
1/4"

PLUG  
3/8"

AUTOMATIC  
COUPLER  
3/8"

1/4"



Thread  
(F) NPT  
in.

Part  
No.

Part  
No.

Part  
No.

Part  
No.

1/4

24.1142

24.3442

24.2142

24.3742

3/8

24.1162

24.3462

24.2162

24.3762

1/2

---

---

24.2172

24.3772

### MALE THREAD



Thread  
(M) NPT  
in.

Part  
No.

Part  
No.

Part  
No.

Part  
No.

1/4

24.1242

24.3542

24.2242

24.3842

3/8

24.1262

24.3562

24.2262

24.3862

1/2

---

---

24.2272

24.3872

### HOSE BARB



Hose  
I.D.  
in.

Part  
No.

Part  
No.

Part  
No.

Part  
No.

1/4

24.1342

24.3642

24.2342

---

5/16

24.1352

24.3652

24.2352

24.3952

3/8

24.1362

24.3662

24.2362

24.3962

1/2

---

---

24.2372

24.3972

I-3 Type available on request