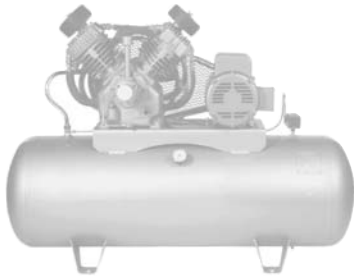


Superior quality for superior performance

**COMPRESSOR OIL**

Part No.	Description
<b>MINERAL</b>	
11.1100	1 litre container
11.1400	4 litre container
<b>SYNTHETIC</b>	
11.1200	1 litre container
11.1500	4 litre container

**IMPROVES COMPRESSOR EFFICIENCY**



**Features**

- Provides excellent protection against oxidation, rust and wear of metal parts
- Prevents viscosity fluctuations resulting from varying operating temperatures
- Extended fluid life, no formation of harmful sludges
- Contains anti-foam and anti-rust additives

**Specifications**

**Working Temperature**

-11°C to 60°C (12°F to 140°F)

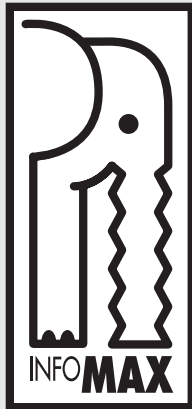
**Standards**

AFNOR E-48600 HL



**Applications**

- Improves life and performance of air compressors
- Ideal for rotary and reciprocating air compressors



**Lubrication**

Preventive maintenance starts with selecting a high quality lubricating oil. Premature wear and the breakdown of air tools is caused largely by inadequate lubrication.

The AirMax range of oils meets the most severe lubricating requirements for most types of equipment and pneumatic tools. AirMax oil, a brand you can trust.

**AIR TOOL OIL**



Specifically formulated for air tools requiring lubrication.

For more details, see page 171

**LUBRICANT ANTIFREEZE**



Ensures stable oil viscosity down to -65°C (-94°F)

For more details, see page 171

**For any questions  
or information about  
compressed air  
you may contact us at  
Tel. : 1-888-730-0501  
Fax : 1-888-730-3522  
or visit our web site at  
[www.airmax.ca](http://www.airmax.ca)**

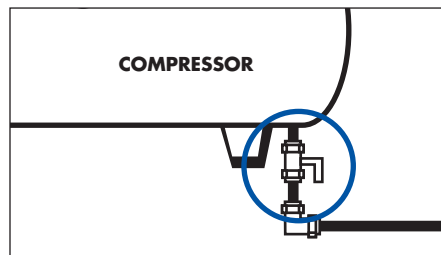
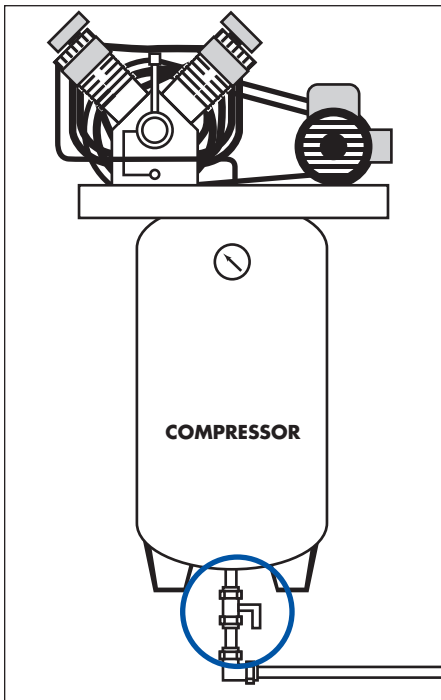


### Applications

- Ideal for compressed air, water or any non-corrosive liquids
- Allows removal of water accumulated in air tanks

### Features

- Solid brass construction
- Available in several configurations



### MALE - 150 PSI

Part No.	Thread (M) NPT
11.2112	1/8"
11.2114	1/4"
11.2116	3/8"
11.2117	1/2"



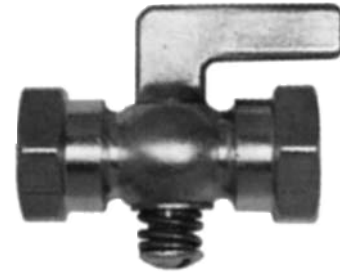
### LEVER HANDLE MALE & FEMALE - 80 PSI

Part No.	Thread (M) NPT x (F) NPT
11.2122	1/8" 1/8"
11.2124	1/4" 1/4"
11.2126	3/8" 3/8"
11.2127	1/2" 1/2"



### LEVER HANDLE DOUBLE FEMALE HEX SHOULDER - 80 PSI

Part No.	Thread (F) NPT x (F) NPT
11.2132	1/8" 1/8"
11.2134	1/4" 1/4"
11.2136	3/8" 3/8"
11.2137	1/2" 1/2"



### LEVER HANDLE DOUBLE MALE THREAD - 80 PSI

Part No.	Thread (M) NPT x (M) NPT
11.2142	1/8" 1/8"
11.2144	1/4" 1/4"
11.2146	3/8" 3/8"
11.2147	1/2" 1/2"



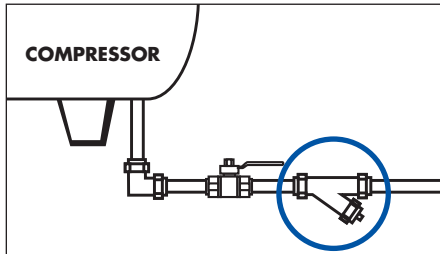
### HOSE END COCKS - 25 PSI

Part No.	Thread (M) NPT	Hose I.D.
11.2152	1/8"	3/8" à 7/16"
11.2154	1/4"	3/8" à 7/16"
11.2156	3/8"	3/8" à 7/16"
11.2157	1/2"	3/8" à 7/16"



**BRONZE "Y" STRAINER**

Part No.	Thread
11.2201	1/8" (F) NPT
11.2202	1/4" (F) NPT
11.2203	3/8" (F) NPT
11.2204	1/2" (F) NPT
11.2205	3/4" (F) NPT
11.2206	1" (F) NPT
11.2207	1-1/4" (F) NPT
11.2208	1-1/2" (F) NPT
11.2209	2" (F) NPT
11.2210	2-1/2" (F) NPT
11.2211	3" (F) NPT
11.2212	4" (F) NPT

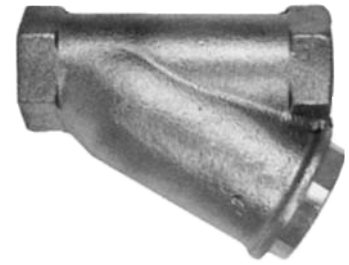


**Specifications**

**Maximum Working Pressure**  
400 PSI

**Construction**

Body : Bronze  
Screen : Stainless Steel Mesh



**Applications**

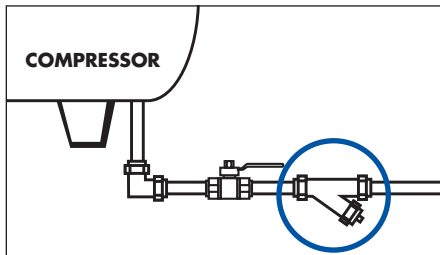
- Screens harmful particles for air preparation equipment
- Can be installed on drop legs or ahead of an automatic drain

**Features**

- Screen is easy to remove and clean
- Economical, prevents breakdowns and early wear
- Extends life of filtering equipment

**STAINLESS STEEL "Y" STRAINER**

Part No.	Thread
11.2224	1/2" (F) NPT
11.2225	3/4" (F) NPT
11.2226	1" (F) NPT
11.2227	1-1/4" (F) NPT
11.2228	1-1/2" (F) NPT
11.2229	2" (F) NPT

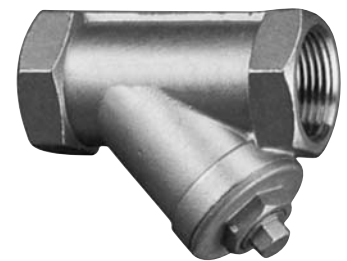


**Specifications**

**Maximum Working Pressure**  
600 PSI

**Construction**

Body : Stainless Steel  
Screen : Stainless Steel



**Applications**

- Ideal for the food, pharmaceutical and petroleum industries
- Screens harmful particles for air preparation equipment
- Can be installed on drop legs or ahead of an automatic drain

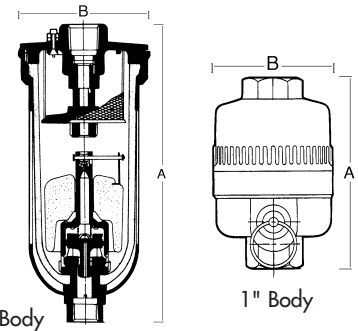
**Features**

- Corrosion resistant
- Easy to remove and clean
- Prevents breakdowns and premature wear
- Extends life of filtration equipment



### MECHANICAL DRAIN - 1/2" AND 1" BODIES

Part No.	Thread (F) NPT	Body in.	Dimensions	
			A	B
11.2240	1/4"	1/2	7-1/4"	3-1/4"
11.2260	3/8"	1/2	7-1/4"	3-1/4"
11.2270	1/2"	1/2	7-1/4"	3-1/4"
11.2280	3/4"	1	7-1/4"	4-1/2"
11.2290	1"	1	7-1/4"	4-1/2"

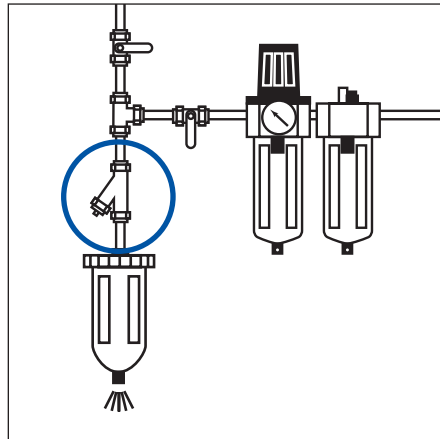


#### Applications

- Allows automatic evacuation of accumulated water and condensates in air lines or compressed air tanks

#### Features

- Highly resistant to the effects of rust and dirt
- Standard metal bowl guard



#### Specifications

##### Maximum Working Pressure

150 PSI

##### Working Temperature

4°C to 60°C (40°F to 140°F)

#### CAUTION

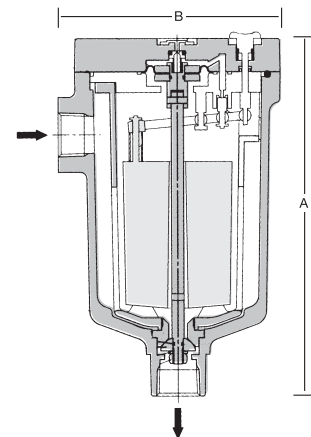
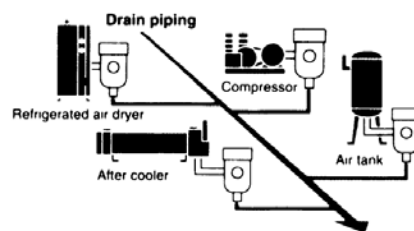
The use of a "Y" strainer ahead of the drain valve is strongly recommended.



### HEAVY DUTY AUTO DRAIN

Part No.	Thread (F) NPT	Dimensions	
		A	B
11.2295	1/2"	7"	4-3/4"

Drains up to 400 cc/min.



#### Applications

- Ideal for compressed air tanks, refrigerated air dryers and other equipment producing large quantities of condensates

#### Features

- Maximum drain discharge up to 400 cc per minute
- Highly resistant to the effects of rust and dirt
- Discharge button on top for easy operation
- Mounting bracket included
- Not influenced by back pressure
- Allows the use of long drain piping



#### Specifications

##### Maximum Working Pressure

145 PSI

##### Working Temperature

5°C to 60°C (41°F to 140°F)

#### CAUTION

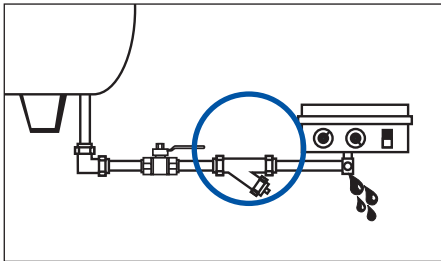
The use of a "Y" strainer ahead of the drain valve is strongly recommended.

**STANDARD ELECTRIC DRAIN 1/4" NPT**

Part No.	Description
11.2340	Electric drain 1/4" (F) NPT
11.2345	Replacement kit (Electronic timer)
11.2350	Replacement Valve

**LIQUID DISCHARGE TO ATMOSPHERE (LITERS)**

Discharge Time	Working Pressure					
	25 PSI	50 PSI	75 PSI	100 PSI	125 PSI	150 PSI
5 sec.	0.397	0.549	0.681	0.795	0.946	0.984
10 sec.	0.795	1.098	1.362	1.590	1.779	1.968
15 sec.	1.192	1.646	2.044	2.385	2.668	2.952



**CAUTION**  
The use of a "Y" strainer ahead of the drain valve is strongly recommended.

**Specifications**

- Maximum Working Pressure**  
200 PSI
- Working Temperature**  
3°C to 75°C (35°F to 165°F)
- Thread**  
1/4" F (NPT)
- Cycle Time**  
1-60 minutes
- Drain Time**  
1-30 seconds
- Voltage**  
115 Volts/1ph/60Hz



**Applications**

- Automatically removes water from air lines, compressed air tanks or refrigerated units

**Features**

- Fully automatic drain controlled by electronic timer
- Economical, saves on maintenance cost and on compressed air demand
- Indicator light shows when drain is in operation
- Corrosion-proof molded plastic enclosure
- 6-foot cord with grounded wall plug
- Large diameter drain orifice prevents clogging
- Two adjustments : drain interval and drain duration

**BRASS COMPACT ELECTRIC DRAIN 1/4", 3/8", 1/2" NPT**

Part No.	Thread	Voltage	Cv
11.2422	1/4" (F) NPT	12 VDC	0.840
11.2423	1/4" (F) NPT	24 VDC	0.840
11.2426	1/4" (F) NPT	24 VAC	0.840
11.2427*	1/4" (F) NPT	120 VAC	0.840
11.2428	1/4" (F) NPT	240 VAC	0.840
11.2432	3/8" (F) NPT	12 VDC	1.12
11.2433	3/8" (F) NPT	24 VDC	1.12
11.2436	3/8" (F) NPT	24 VAC	1.12
11.2437*	3/8" (F) NPT	120 VAC	1.12
11.2438	3/8" (F) NPT	240 VAC	1.12
11.2442	1/2" (F) NPT	12 VDC	2.45
11.2443	1/2" (F) NPT	24 VDC	2.45
11.2446	1/2" (F) NPT	24 VAC	2.45
11.2447*	1/2" (F) NPT	120 VAC	2.45
11.2448	1/2" (F) NPT	240 VAC	2.45

\*(Standard)

11.2490 Chronometer



**Specifications**

- Maximum Working Pressure**  
300 PSI
- Working Temperature**  
-10°C to 50°C (14°F to 122°F)
- Cycle Time**  
1-45 minutes
- Drain Time**  
0.25-25 seconds

**CAUTION**  
The use of a "Y" strainer ahead of the drain valve is strongly recommended.

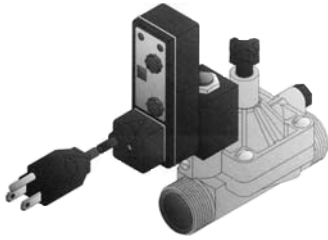
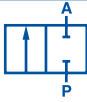
**Applications**

- Automatically removes water from air lines, compressed air tanks or refrigerated units

**Features**

- Fully automatic drain controlled by electronic timer
- Modular : All valves and timers are interchangeable to improve serviceability
- Indicator light shows valve status
- Pilot operated diaphragm
- Normally closed
- Nylon corrosion-proof timer case
- Brass valve body, Viton seals
- 6-foot cord with grounded wall plug
- Standard voltage : 120 Volts

2-way/2-position



### Applications

- Automatically removes water from air lines, compressed air tanks or refrigerated units
- Reduces maintenance time on air lines and on compressed air demand

### Features

- Fully automatic draining controlled by electronic timer
- Indicator light shows valve status
- Large valve orifice size (1" dia.)
- Nylon moulded valve and Buna-N seals
- 2-way/2-position normally closed
- 6-foot cord with grounded wall plug

### Specifications

#### Maximum Working Pressure

150 PSI

#### Working Temperature

-10°C to 50°C (14°F to 122°F)

#### Thread

3/4" (F) NPT  
1" (M) NPT

#### Cycle Time

1-45 minutes

#### Drain Time

0.25-25 seconds

#### Standard Voltage

120 Volts Ac

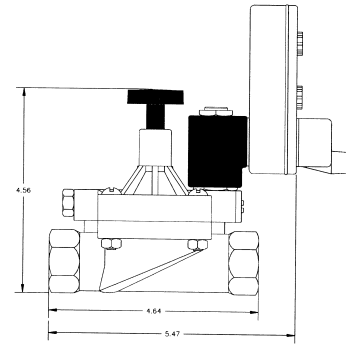
### CAUTION

The use of a "Y" strainer ahead of the drain valve is strongly recommended.

### HIGH FLOW ELECTRIC DRAIN WITH NYLON VALVE (3/4", 1" NPT)

Part No.	Thread	Voltage	Cv
11.2652	3/4" (F) NPT	12 VDC	9.5
11.2653	3/4" (F) NPT	24 VDC	9.5
11.2656	3/4" (F) NPT	24 VAC	9.5
11.2657*	3/4" (F) NPT	120 VAC	9.5
11.2658	3/4" (F) NPT	240 VAC	9.5
11.2662	1" (F) NPT	12 VDC	14
11.2663	1" (F) NPT	24 VDC	14
11.2666	1" (F) NPT	24 VAC	14
11.2667*	1" (F) NPT	120 VAC	14
11.2668	1" (F) NPT	240 VAC	14

\*(Standard)



For any questions  
or information about  
compressed air  
you may contact us at  
Tel. : **1-888-730-0501**  
Fax : **1-888-730-3522**  
or visit our web site at  
**www.airmax.ca**

**SAFETY VALVE 1/4" NPT**

Part No.	Pressure Settings (+/- 3%) PSI	Air Flow SCFM	Thread
11.3200	50	47	1/4" (M) NPT
11.3205	70	60	1/4" (M) NPT
11.3210	75	66	1/4" (M) NPT
11.3215	100	96	1/4" (M) NPT
11.3220	115	96	1/4" (M) NPT
11.3230	125	103	1/4" (M) NPT
11.3235	135	120	1/4" (M) NPT
11.3240	140	115	1/4" (M) NPT
11.3250	150	128	1/4" (M) NPT
11.3255	155	137	1/4" (M) NPT
11.3260	163	132	1/4" (M) NPT
11.3270	190	152	1/4" (M) NPT
11.3280	200	160	1/4" (M) NPT



**Applications**

- Provides safe pressure control for compressed air tanks

**Features**

- Manufactured under regulations of the "National Board of Boiler and Pressure Vessel Inspectors" in accordance with section VII of the ASME Code covering valves for unfired pressure vessels
- High quality, corrosion resistant, safety valves
- Optimum high-flow discharge rates

**Specifications**

**Pressure Settings**

1/4" (M) NPT : 50 PSI to 200 PSI  
 3/8" (M) NPT : 50 PSI to 190 PSI  
 1/2" (M) NPT : 40 PSI to 250 PSI

**Working Temperature**

-40°C to 177°C (-40°F to 350°F)

**Construction**

Body : Brass  
 Seal : Silicone

**Maximum Installation Torque**

100 lb/in.

**Norms**

CRN OG-679-C (1/4" and 3/8")  
 CRN OG-2663.1C

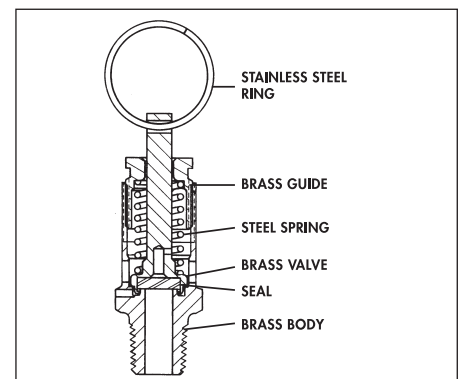
**SAFETY VALVE 3/8" NPT**

Part No.	Pressure Settings (+/- 3%) PSI	Air Flow SCFM	Thread
11.3300	50	47	3/8" (M) NPT
11.3310	75	66	3/8" (M) NPT
11.3320	115	96	3/8" (M) NPT
11.3330	125	103	3/8" (M) NPT
11.3340	140	115	3/8" (M) NPT
11.3350	150	132	3/8" (M) NPT
11.3360	163	132	3/8" (M) NPT
11.3370	190	152	3/8" (M) NPT

**SAFETY VALVE 1/2" NPT**

Part No.	Pressure Settings (+/- 3%) PSI	Air Flow SCFM	Thread
11.3400	40	108	1/2" (M) NPT
11.3405	60	149	1/2" (M) NPT
11.3410	75	189	1/2" (M) NPT
11.3415	100	230	1/2" (M) NPT
11.3420	120	271	1/2" (M) NPT
11.3430	125	281	1/2" (M) NPT
11.3440	140	311	1/2" (M) NPT
11.3450	150	331	1/2" (M) NPT
11.3460	160	352	1/2" (M) NPT
11.3470	180	393	1/2" (M) NPT
11.3480	200	433	1/2" (M) NPT
11.3485	220	474	1/2" (M) NPT
11.3490	235	505	1/2" (M) NPT
11.3495	250	535	1/2" (M) NPT

**IDEAL FOR INDUSTRIAL COMPRESSORS**





### Applications

- Provides safe pressure control for compressed air tanks

### Features

- Manufactured under the regulations of the National Board of Boiler and Pressure Vessel Inspectors in accordance with section I and VIII of the ASME V (vapour) Codes covering valves for unfired pressure vessels
- High quality, corrosion resistant, safety valves
- Outlet drain within the body
- Maximum air flow

### Specifications

#### Construction

Body : Brass  
Lever and Spring : Galvanized Steel  
Seal : Silicone

#### Norms

CRN OG-2663.1C

SUITABLE FOR LARGE COMPRESSORS



### SAFETY VALVE 1/2" NPT

Part No.	Pressure Settings (+/- 3%) PSI	Air Flow SCFM (@ 60°F)	Air Inlet	Air Outlet
11.3603	100	243	1/2" (M) NPT	3/4" (F) NPT
11.3605	125	296	1/2" (M) NPT	3/4" (F) NPT
11.3607	150	350	1/2" (M) NPT	3/4" (F) NPT
11.3609	200	457	1/2" (M) NPT	3/4" (F) NPT

### SAFETY VALVE 3/4" NPT

Part No.	Pressure Settings (+/- 3%) PSI	Air Flow SCFM (@ 60°F)	Air Inlet	Air Outlet
11.3623	100	433	3/4" (M) NPT	1" (F) NPT
11.3625	125	529	3/4" (M) NPT	1" (F) NPT
11.3627	150	625	3/4" (M) NPT	1" (F) NPT
11.3629	200	816	3/4" (M) NPT	1" (F) NPT

### SAFETY VALVE 1" NPT

Part No.	Pressure Settings (+/- 3%) PSI	Air Flow SCFM (@ 60°F)	Air Inlet	Air Outlet
11.3643	100	677	1" (M) NPT	1-1/4" (F) NPT
11.3645	125	826	1" (M) NPT	1-1/4" (F) NPT
11.3647	150	975	1" (M) NPT	1-1/4" (F) NPT
11.3649	200	1274	1" (M) NPT	1-1/4" (F) NPT

### SAFETY VALVE 1-1/4" NPT

Part No.	Pressure Settings (+/- 3%) PSI	Air Flow SCFM (@ 60°F)	Air Inlet	Air Outlet
11.3663	100	1111	1-1/4" (M) NPT	1-1/2" (F) NPT
11.3665	125	1356	1-1/4" (M) NPT	1-1/2" (F) NPT
11.3667	150	1601	1-1/4" (M) NPT	1-1/2" (F) NPT
11.3669	200	2091	1-1/4" (M) NPT	1-1/2" (F) NPT

### SAFETY VALVE 1-1/2" NPT

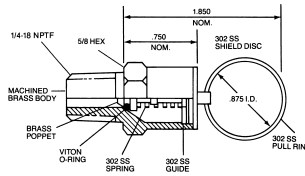
Part No.	Pressure Settings (+/- 3%) PSI	Air Flow SCFM (@ 60°F)	Air Inlet	Air Outlet
11.3683	100	1733	1-1/2" (M) NPT	2" (F) NPT
11.3685	125	2115	1-1/2" (M) NPT	2" (F) NPT
11.3687	150	2498	1-1/2" (M) NPT	2" (F) NPT
11.3689	200	3262	1-1/2" (M) NPT	2" (F) NPT

### SAFETY VALVE 2" NPT

Part No.	Pressure Settings (+/- 3%) PSI	Air Flow SCFM (@ 60°F)	Air Inlet	Air Outlet
11.3693	100	2844	2" (M) NPT	2-1/2" (F) NPT
11.3695	125	3472	2" (M) NPT	2-1/2" (F) NPT
11.3697	150	4099	2" (M) NPT	2-1/2" (F) NPT
11.3699	200	5353	2" (M) NPT	2-1/2" (F) NPT

**PRESSURE RELIEF VALVE 1/4" (M) NPT**

Part No.	Pressure Settings (+/- 10%) PSI	Air Flow SCFM	Ring Color
11.4105	5	17	Brown
11.4110	10	14	Dark grey
11.4115	15	43	Dark blue
11.4120	20	50	Dark green
11.4125	25	56	Red
11.4130	30	63	Yellow
11.4140	40	82	Gold
11.4150	50	97	Light blue
11.4160	60	110	Green
11.4175	75	134	White



**Applications**

- Protects against equipment damage or personnel injury resulting from dangerous pressure build-ups

**Features**

- Automatically relieves and resets pressure to normal
- Pressure may be reduced manually
- Threads are pre-coated with teflon

**Specifications**

**Thread**

1/4" (M) NPT

**Construction**

Body : Brass

Lever and Spring : Stainless Steel

Seal : Viton

**Norms**

ANSI C-57.12.2

**IDEAL FOR PORTABLE AIR TANKS**



For any questions or information about compressed air you may contact us at  
**Tel. : 1-888-730-0501**  
**Fax : 1-888-730-3522**  
 or visit our web site at  
[www.airmax.ca](http://www.airmax.ca)



Threads are pre-coated with teflon



### Applications

- Designed to keep air volume and pressure from escaping back into compressor heads or into compressed air lines supply

### Features

- Two-piece solid brass body
- Patented jam resistant piston design
- Triple-balanced flow outlet
- 1/8-27 (F) NPT exhaust port available on some models

### Specifications

**Maximum Working Pressure**  
500 PSI

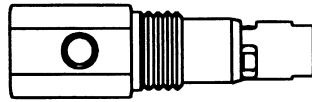
**Maximum Working Temperature**  
232°C (450°F)

#### Construction

Body : Brass  
Spring : Stainless Steel  
Piston : Teflon

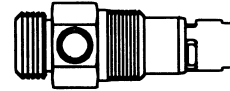
### CHECK VALVE FOR COMPRESSOR WITH 1/8" (F) NPT UNLOADER PORT

#### FEMALE NPT TO MALE NPT



Part No.	Inlet (F) NPT	Outlet (M) NPT
11.5231	3/8"	1/2"
11.5232	1/2"	1/2"
11.5233	1/2"	3/4"
11.5234	3/4"	3/4"
11.5235	3/4"	1"
11.5236	1"	1"
11.5237	1-1/4"	1-1/4"
11.5238	3/4"	1-1/2"
11.5239	1-1/2"	1-1/2"

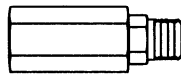
#### COMPRESSION FITTING MALE NPT (INCLUDES NUT AND CLAMP)



Part No.	Inlet (Compression fitting)	Outlet (M) NPT
11.5350*	tube 3/8"	3/8"
11.5351	tube 3/8"	1/2"
11.5352	tube 1/2"	1/2"
11.5354	tube 3/4"	3/4"
11.5355	tube 3/4"	1"

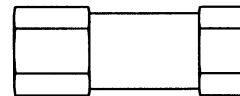
### IN-LINE CHECK VALVE

#### FEMALE VALVE NPT TO MALE NPT



Part No.	Inlet	Outlet
11.6304	1/4" (F) NPT	1/4" (M) NPT

#### FEMALE VALVE



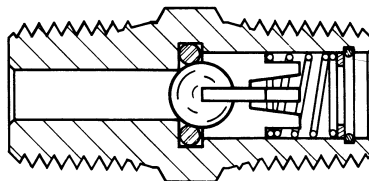
Part No.	Thread (F) NPT
11.6314	1/4"
11.6315	3/8"
11.6316	1/2"
11.6317	3/4"
11.6318	1"
11.6319	1-1/2"



### Features

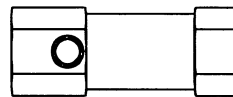
- Check valve with stainless steel ball mechanism
- Brass body
- Buna-N or metal to metal seat
- Maximum Working Pressure : 1000 PSI
- Working Temperature :  
-40°C to 110°C (-40°F to 230°F)

#### MALE IN-LINE VALVE NPT



Metal to Metal Seat Part No.	Buna-N Seat Part No.	Thread (M) NPT
11.6334	11.6344	1/4"
11.6336	11.6346	3/8"
11.6337	11.6347	1/2"

#### FEMALE VALVE (WITH 1/8" (F) NPT UNLOADER PORT)



Part No.	Thread (F) NPT
11.6324	1/4"
11.6325	3/8"
11.6326	1/2"
11.6327	3/4"
11.6328	1"
11.6329	1-1/2"

## BRASS CHECK VALVE

**200 PSI**

Part No.	Thread (F) NPT
11.7106	3/8
11.7107	1/2
11.7108	3/4
11.7109	1
11.7114	1-1/4
11.7117	1-1/2
11.7120	2
11.7127	2-1/2
11.7130	3

### Features

- Ideal for compressed air, water or steam
- To be installed on compressed air lines to prevent back pressure
- Made of solid brass
- Maximum Working Pressure : 200 PSI



## STAINLESS STEEL CHECK VALVE

**200 PSI**

Part No.	Thread (F) NPT
11.7207	1/2
11.7208	3/4
11.7209	1
11.7214	1-1/4
11.7217	1-1/2
11.7220	2

### Features

- Suitable for the agri-food and petrochemical industries, and for highly corrosive applications
- Prevents back pressure
- Entirely made from stainless steel
- 100% full flow
- Teflon seal
- Maximum Working Pressure : 200 PSI
- Maximum Working Temperature: 175°C (350°F)



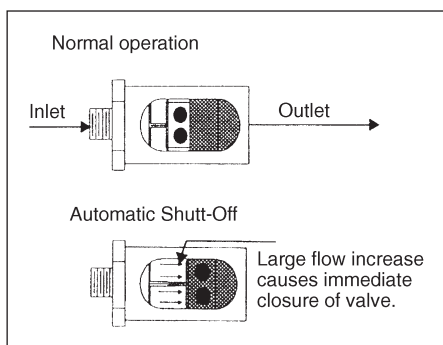
## SAFETY EXCESS FLOW CHECK VALVE

**250 PSI**

Part No.	Thread (F) NPT
11.8104	1/4
11.8106	3/8
11.8107	1/2

### Features

- Specially designed to stop flow in case of an air hose rupture or an accidental disconnection
- Protects plant personnel and equipment from accidents caused by air hose whip
- A large increase in flow pressure forces the valve to close
- Fully automatic mechanism
- Corrosion-proof mechanism
- Maximum Working Pressure : 250 PSI



**PREVENTS DANGEROUS AIR HOSE WHIP**

